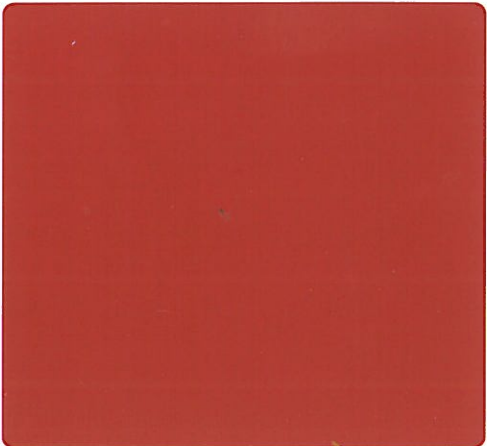
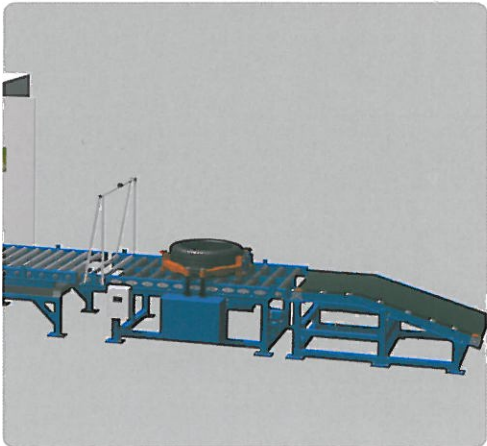
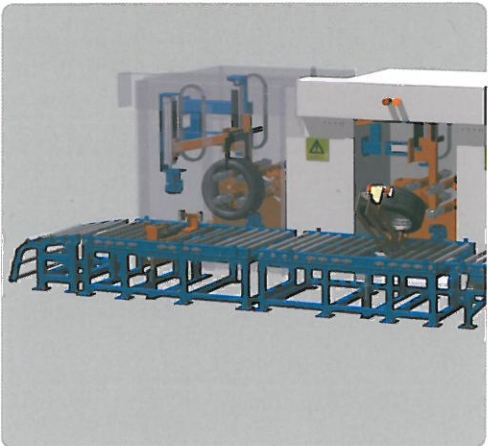
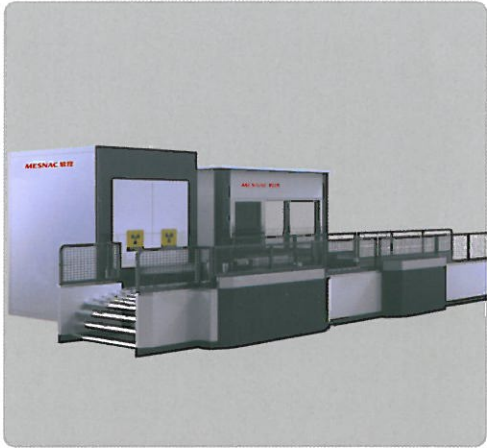
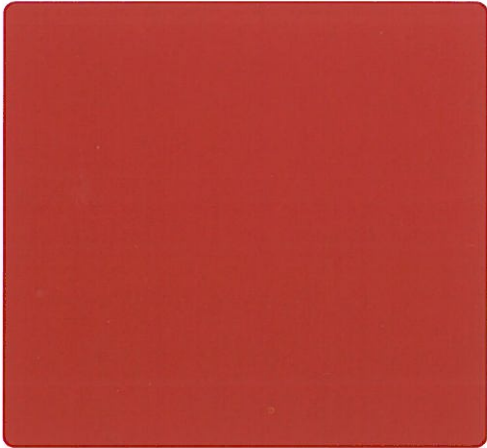
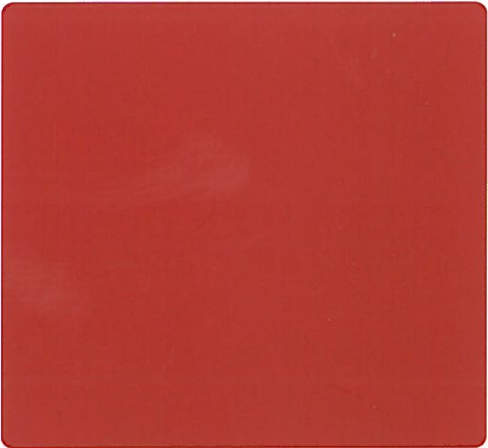


MESNAC
YLX Series X-ray Tire
Testing Machine





YLX Series X-ray Tire Testing Machine

Functions

X-ray tire testing machine is used for inner structure inspection of PCR, TBR, OTR and retreading tires. Testing items include: carcass body ply spacing and turn-up, steel belt grading, broken joint, bubbles, steel break, uneven steel distributing, foreign objects and bead concentricity, etc.

Safety Protection

PCR and TBR X-ray testing machine adopts six-side protection. OTR X-ray testing machine adopts five-side protection. Its manufacture standard conforms to National Related Laws and Regulations and industrial standard. Its protective capability accords with GBZ117-2006 "Industrial X-ray Detection and Radiation Protection Standard" ($< 2.5\mu\text{Sv/h}$). In addition, it uses safety relay for safety linkage control.





Main Technical Parameters

Items	PCR	TBR(Vertical)	TBR(Horizontal)	Small OTR	Giant OTR
Tested Tires					
Bead size	14"- 26"	15"- 27"	15"- 27"	20"- 35"	35"- 63"
Tire outer diameter	500-900mm	700-1400mm	700-1400mm	1266-2175mm	2175-4026mm
Tire section width	100-400mm	150-500mm	200-550mm	375-889mm	750-1650mm
Tire weight	Max.40kg	Max.110kg	Max.110kg	Max.1120kg	Max.6000kg
Tire thickness	200mm	200mm	200mm	200mm	200mm
Tire rotating speed	26m/min	54m/min	26m/min	11m/min	13m/min
Cycle time	≤ 35s/tire	≤ 23s/tire	≤ 28s/tire	≤ 7min/tire	≤ 12min/tire
Testing Conditions					
Main power	AC380V,50Hz, 3phase5line				
Control power	DC24V				
Capacity	20kW	40kW	20kW	30kW	35kW
Size (length × width × height)mm	9296 × 5050 × 2753	10302 × 5050 × 2753	10630 × 3196 × 2497	4080 × 3380 × 3585	10350 × 7200 × 6000
Ambient temp	5-40℃				
Relative humidity	Max80%, no dew				
X-ray Generate Tube					
Max voltage	100kV	120kV	120kV	120kV	160kV
Power	300W	480W	480W	480W	1000W
Radiate angle	280 × 8°	300 × 35°	300 × 35°	300 × 35°	360 × 40°
Tube weight	1.7kg	1.7kg	1.7kg	1.7kg	8kg
LDA Detector					
Resolution	0.4mm	0.4-0.8mm	0.4-0.8mm	0.8mm	1.5mm
Effective length	1434mm	1434mm	1434mm	3174mm	1344mm
Min integral time	1.5ms	2ms	1.5ms	1.5ms	1.5ms
Resolution	16 digit	16 digit	16 digit	16 digit	16 digit
Power	60W	60W	60W	60W	60W
Type	U-type	U-type	U-type	U-type	straight type

Product Model

Machine Model	Machine Name
YLX-JL1426	PCR X-ray testing machine with bead expander
YLX-ZWI527	TBR X-ray testing machine
YLX-ZL1527	TBR X-ray testing machine with bead expander
YLX-2ZL1527	TBR X-ray testing machine with bead expander double-station
YLX-G2035	OTR X-ray testing machine
YLX-G3563	OTR X-ray testing machine