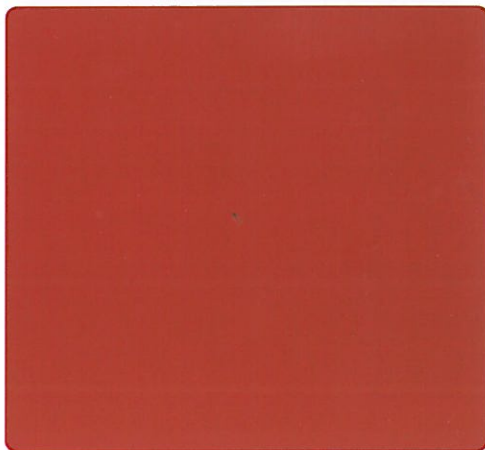
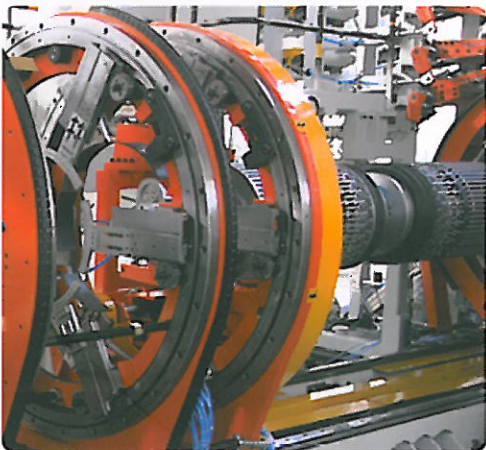
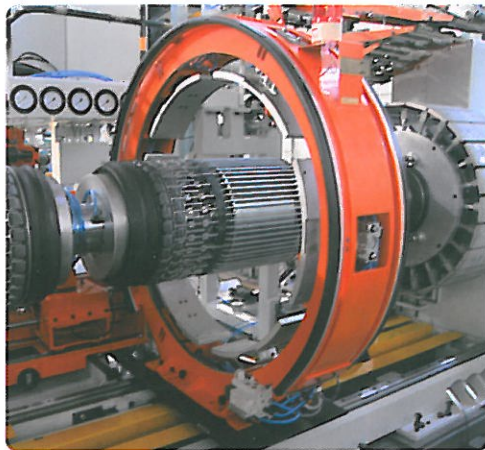
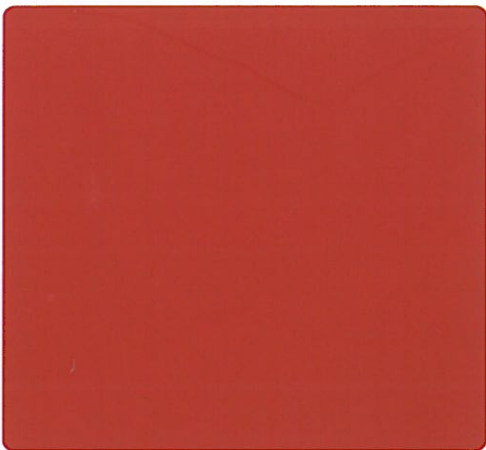


MESNAC

**LCZ-3Z1724 Three-drum
TBR Tire Building Machine**



LCZ-3Z1724 Three-drum TBR Tire Building Machine



MESNAC

Machine Application

Building machine, mainly used for production of heavy truck radial tires and light truck radial tires, including 2 kinds of machine types:

Heavy truck: Tire production sizes: 20"—24.5", 120 tires/shift.

Light truck: Tire production sizes: 16"—20", 150 tires/shift.

Machine Features

High production efficiency, stable quality of green tires, good uniformity and symmetry. The safety device accords with CE requirement; the machine has emergency switch, emergency pull rope, safety switch and safety protection net as well as program protection.



Technical Parameters

Heavy Truck Type

Sizes	20 " —24.5 "
Diameter of belt drum	Min820—Max1140
Width of belt drum	450
Diameter range of carcass transfer ring	Min500—Max930
Diameter range of belt transfer ring	Min720—Max1230
Bead distance	Min400—Max940
Width of sidewall	Min140—Max410
Width of innerliner	Min430—Max900
Width of sidewall+innerliner	Min940—Max1550
Width of ply	Min600—Max1200
Width of belt	Min50—Max380
Width of tread	Min200—Max400
Width of under belt cushion	Min60—Max200

Light Truck Type

Sizes	15 " —20 "
Diameter of belt drum	Min668—Max1010
Width of belt drum	350
Diameter range of carcass transfer ring	Min380—Max820
Diameter range of belt transfer ring	Min650—Max1050
Bead distance	Min380—Max720
Width of sidewall	Min140—Max350
Width of innerliner	Min380—Max750
Width of sidewall+innerliner	Min650—Ma1350
Width of ply	Min500—Max900
Width of belt	Min45—Max230
Width of tread	Min200—Max350
Width of under belt cushion	Min50—Max150