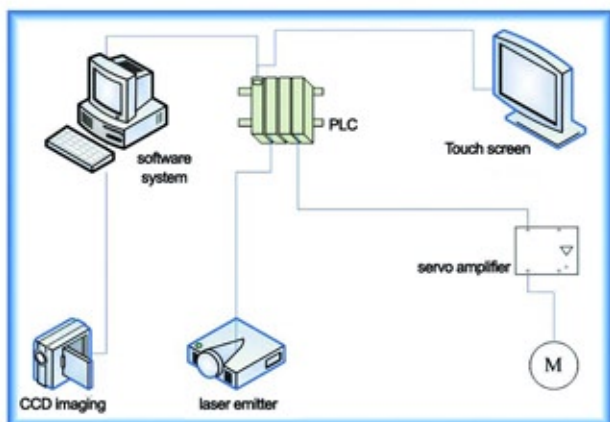
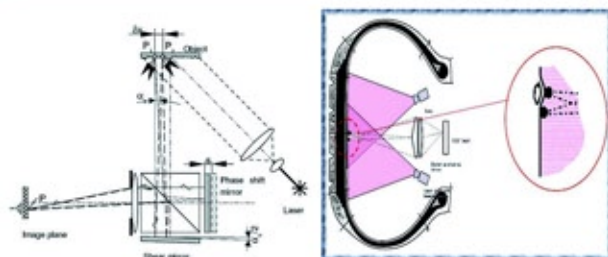
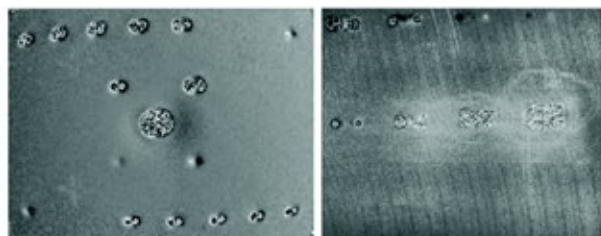


### BRIEF INTRODUCTION

YLS Series Tire Shearography Testing Machine is mainly used to detect bubble flaw of tread, shoulder, sidewall etc. The system calibrates by using standard bubble specimen and acquires bubble holographic image and calculate dimension and position of bubbles at the same time and grades tyre automatically and synthetically according to dimension and position of bubbles. The machine is used to quality inspection of new tyres and retreading tyres.

### COMPOSITION



### MAIN TECHNICAL PARAMETER

| Item                            | Tyre type  |                        |
|---------------------------------|--|------------------------|
|                                 | Passenger car\ light truck tire\ TBR tire  |                        |
| Tyre specification              | Tyre outer diameter  | 500 ~ 1400mm           |
|                                 | Tyre cross section width   | 140 ~ 550mm            |
|                                 | Rim diameter   | 15" ~ 27.5"            |
|                                 | Tyre bead width  | ≥ 80mm                 |
|                                 | Tyre Weight(max)   | 160kg                  |
| Test cycle                      | 70s/ tyre  |                        |
| Test condition                  | Compressed air   | 0.6MPa, dry and no oil |
|                                 | Compressed air consumption amount  | About 30L/min          |
|                                 | Ambient temperature  | 5°C~40°C               |
|                                 | Relative humidity  | Max 80%, no frost      |
| Image prober position precision | Horizontal direction   | ± 0.2 mm               |
|                                 | Rotation direction   | ± 1 degree             |
| Tyre position precision         | ± 3.0mm  |                        |
| Machine noise                   | ≤ 85dB   |                        |
| Work mode                       | Manual and automatic   |                        |
| Test precision                  | Bubble minimum dimension   | 2mm                    |
|                                 | resolution ratio   | 1mm                    |
| Vacuum extent                   | 50mBar ± 1 mBar  |                        |
| Prober active scope             | Horizontal movement distance(max)  | 300 ± 0.2mm            |
|                                 | Vertical movement distance(max)  | 541mm ± 0.2mm          |
|                                 | Maximum rotation angle (max)   | 330degree              |
| Image requirement               | Display: upper monitor display tyre holograph all parts real time and mark position of bubbles |                        |
|                                 | Calculate: Display bubbles flaw over 2mm in the upper monitor                                  |                        |
|                                 | Judge: Grade tyre automatically according to the position and dimension of bubble flaw         |                        |
| Machine type                    | Machine Name   |                        |
| YLS2-1527                       | Tire Shearography Testing Machine  |                        |