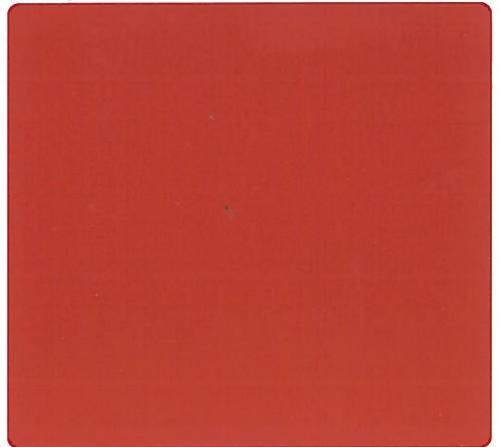
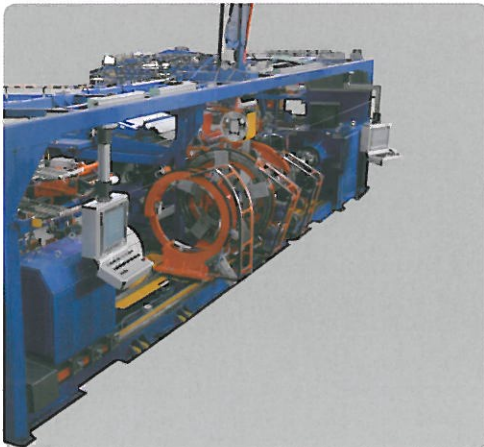
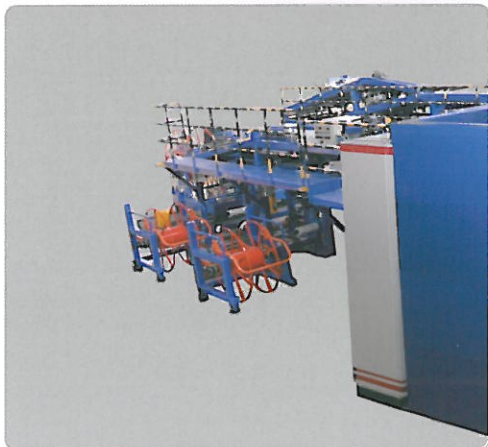
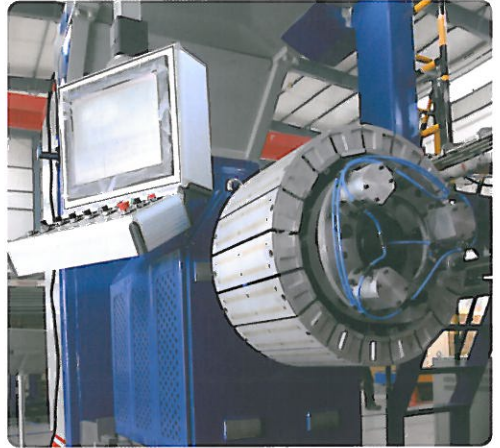
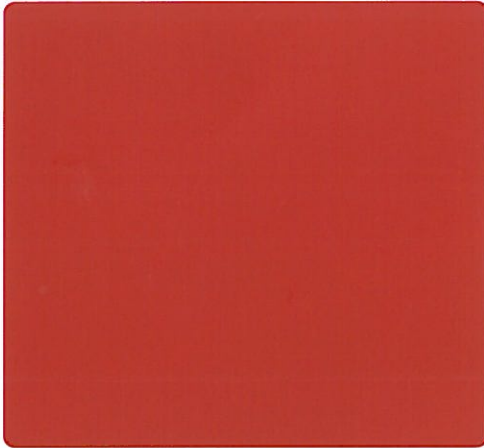
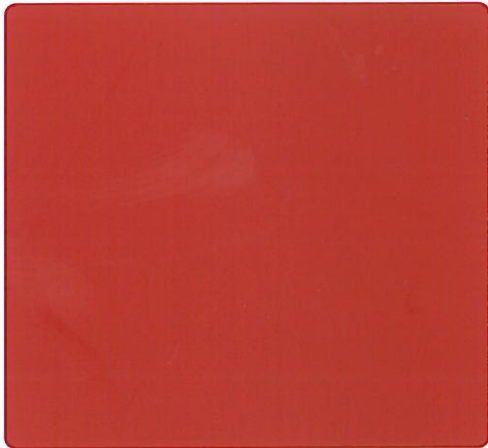


MESNAC

**LCZ-J1422 PCR Tire
Building Machine**



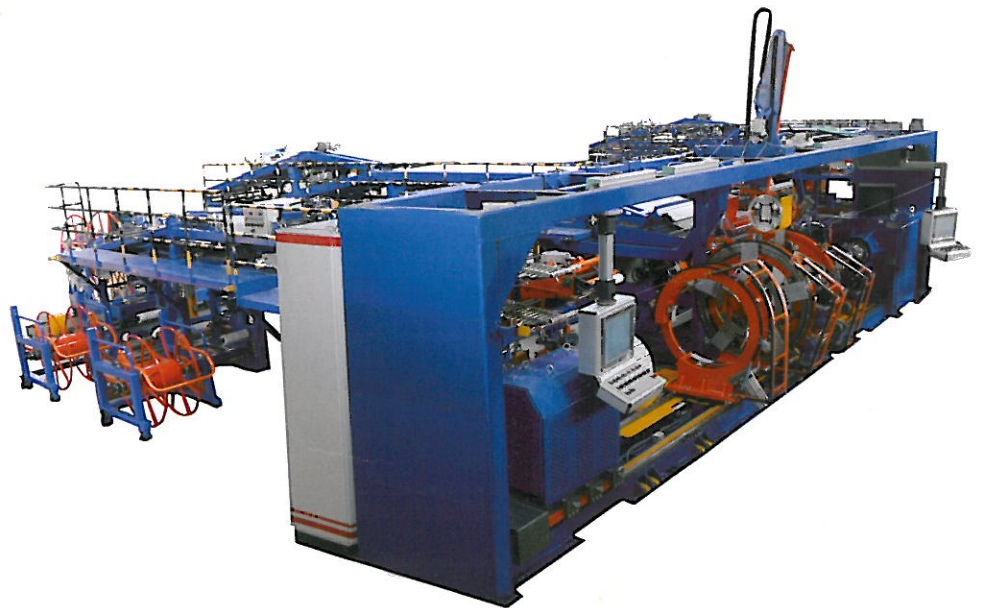
LCZ-J1422 PCR Tire
Building Machine



Equipment
Features

MESNAC

LCZ-J1422 PCR Tire Building Machine

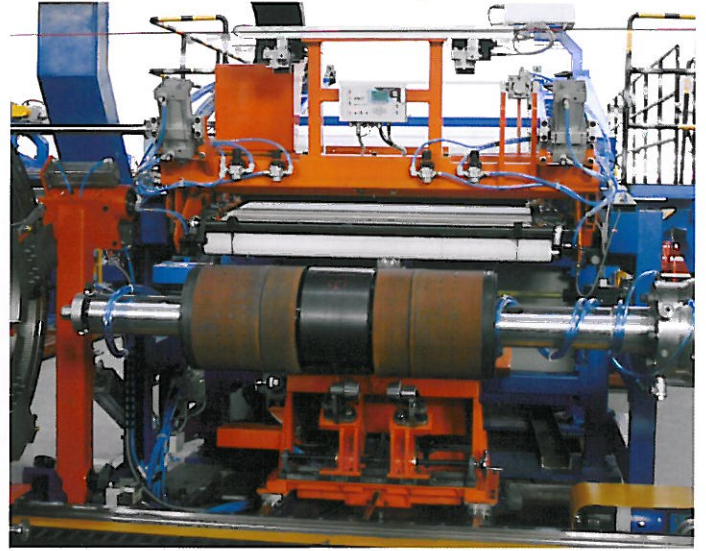
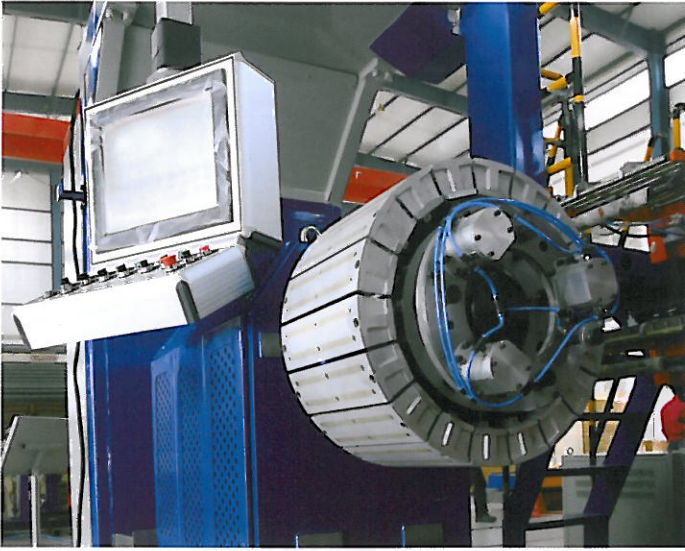


Features

Large applying range, stable green tire quality, high producing efficiency.

Function

- LCZ-J1422 PCR Tire Building Machine is one-stage tire building machine which is own-developed by MESNAC Co., Ltd, mainly for production of PCR and LTR tires.
- Applicable sizes: 14 " —22 " .
- Output of one shift: more than 300 pcs.
- Green tires are produced in two stages:
 - Shaping drum's stage: For application of carcass ply, pre-assembled component of innerliner and sidewall, and shaping.
 - Belt's drum stage: For application of belt, JLB and tread.



Technical Parameters

Applicable Sizes	14 " —22 "
Diameter of Belt Drum	Min ϕ 460—Max ϕ 820(mm)
Width of Belt Drum	400(mm)
Clamp Diameter of Transfer Ring	Min ϕ 480—Max ϕ 875(mm)
Width of Sidewall	Min110—Max230(mm)
Width of Innerliner	Min330—Max750(mm)
Width of Sidewall and Innerliner	Max1200(mm)
Width of Carcass Ply	Min290—Max1200(mm)
Width of Belt	Min150—Max370(mm)
Width of Tread	Min150—Max400(mm)
Width of JLB	Min10—Max25(mm)