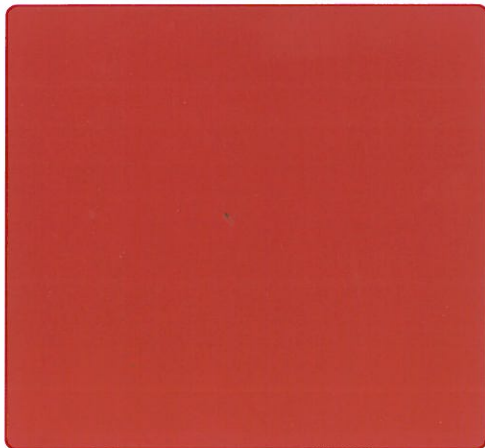
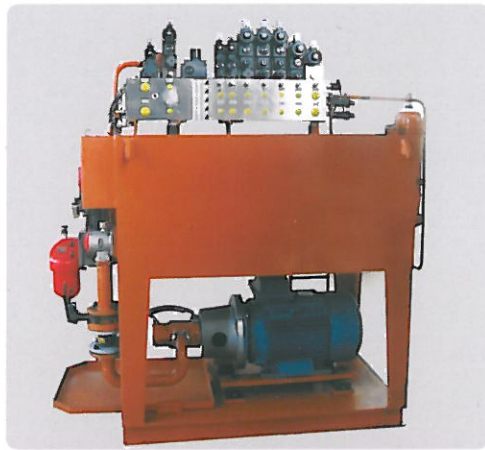
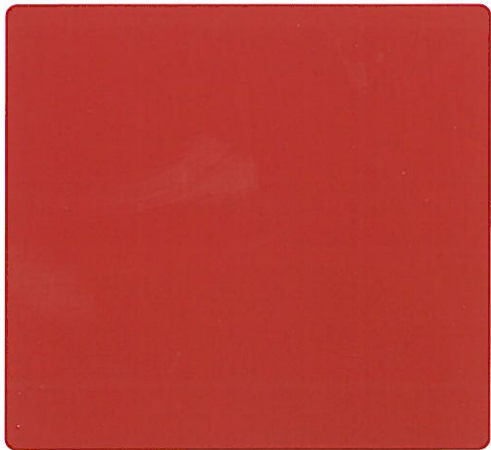


MESNAC
CP48" Hydraulic
Curing Press





CP48" Hydraulic Curing Press



Product Usage

CP48" hydraulic curing press is for automatically curing tyres of 14"–20" sizes in segmented moulds or two half moulds. The power can be either hot water or nitrogen.

Product Performance

The equipment adopts the latest structure in all over the world. The frame structure is compacted and also forced uniformly. The bladder mechanism is B type or RIB type, and technical parameter can be automatically set by internal linear movement sensor easily. The open/close mold speed is controlled by proportion valve of hydraulic system, so it would reduce the auxiliary time of equipment effectively that leads to curing cost saving. The mold would be locked in the "fully open" position by mechanical method, which helps avoid the mold closing by chance, improving the safety of the equipment. It has accurate design of the mechanical movement, so it would achieve many advantages such as energy saving, easy operation and easy maintenance.



Technical Parameters

Inner diameter of chambers	ϕ 1260 mm
Outer diameter of heating plates	ϕ 1250mm
Closing force	Max 1800kN
Extent of bead diameter	14"-20"
Type of the bladder mechanism	B or R.I.B
Minimum height of container	250mm
Maximal height of container	510mm
Max. diameter of green tire	ϕ 880mm
Max. height of green tire	540mm

Production Model

Model	Product
LLY-B1260*1800*2	B type hydraulic curing press
LLY-RIB1260*1800*2	RIB type hydraulic curing press